



MCM Technology

Developers of the MCM Real-Time™ Enterprise Solutions

Real-Time™ Public Safety and Communications Asset Lifecycle Management

www.mcmtechnology.com

©1994-2004 MCM Real Time™



What Results from Lifecycle Management?

The first is **ACCOUNTABILITY OF ASSETS**

MCM software provides you with an accurate, real time, and up to the minute picture of where every asset is, who has it, and how it is being used. If you have 5 million assets, you know where all 5 million assets are.. *right now*. Then, imagine turning that image sideways so you can see the history behind each asset. With our software, you will see a record of every location and caretaker since it's inception into the system. In addition, when the asset needs to be sent for repair or moved between departments the MCM system will track its location in real time.

Next is complete control over **SERVICE AND INVENTORY**

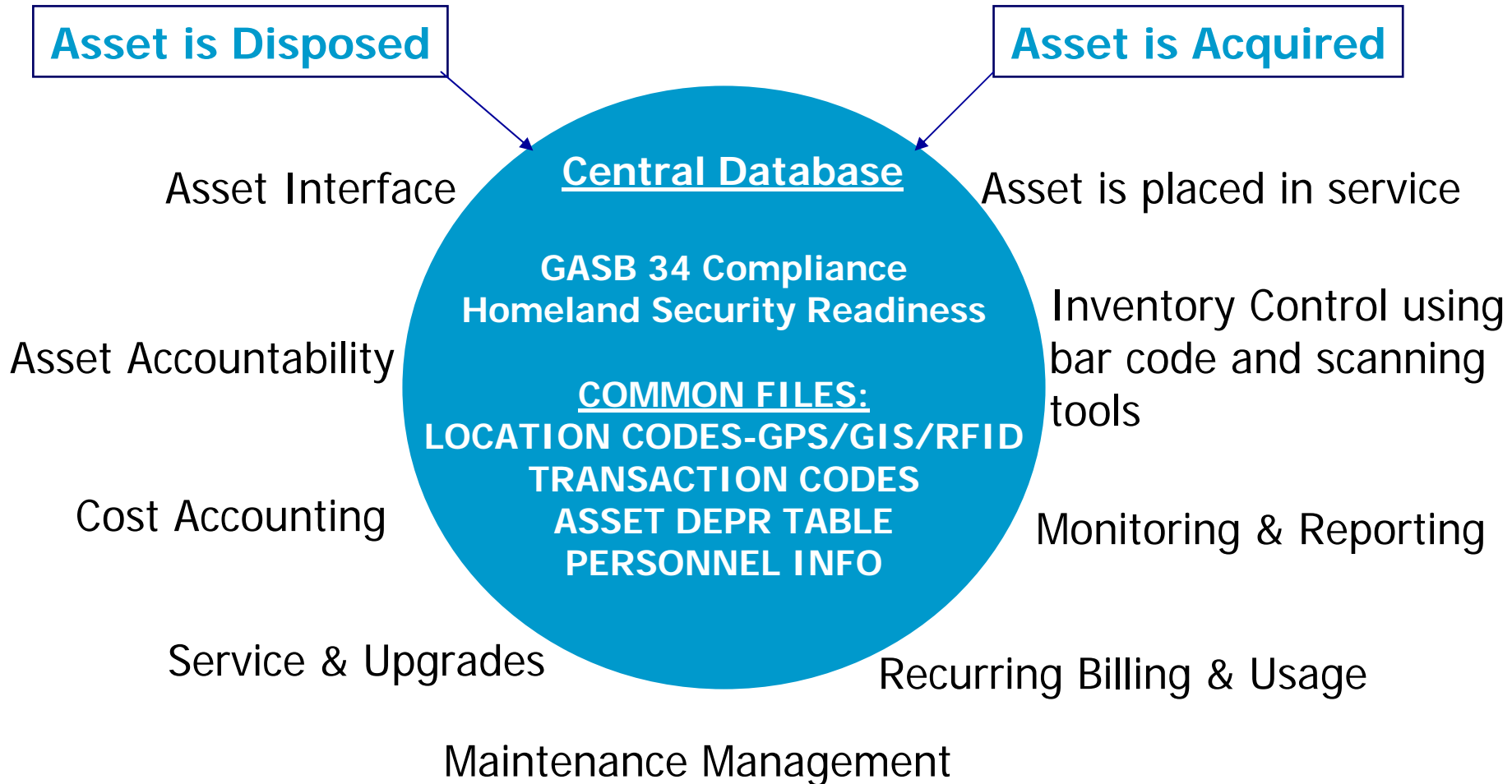
Everything it takes to keep communications assets in service is something we make easier. We produce seamless work orders. We maintain multi-location inventory and automatically reorder parts. We maintain warranty control over items and systems, and we insure a proper work order ticket follows the item as it moves in and out of departmental control, or to and from vendors. We do all that automatically. Multi-location inventory control and parts reordering is fully automated. We support handheld readers and signature capture devices to make the process more accountable, efficient, and cost effective.

And finally the Lifecycle Management is the ultimate tool to effect **COST CONTROL**

MCM software is accurate to the penny when it comes to tracking costs, assigning billing responsibilities, controlling vendor pricing and interfacing with financial management software. Often running in the background, MCM Communications Asset Management Software is giving communications and maintenance administrators a host of new choices and strengths. On a day-by-day basis, we are there protecting your department from surprises that effect your budget or put your reputation at risk.



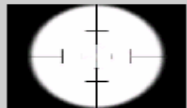
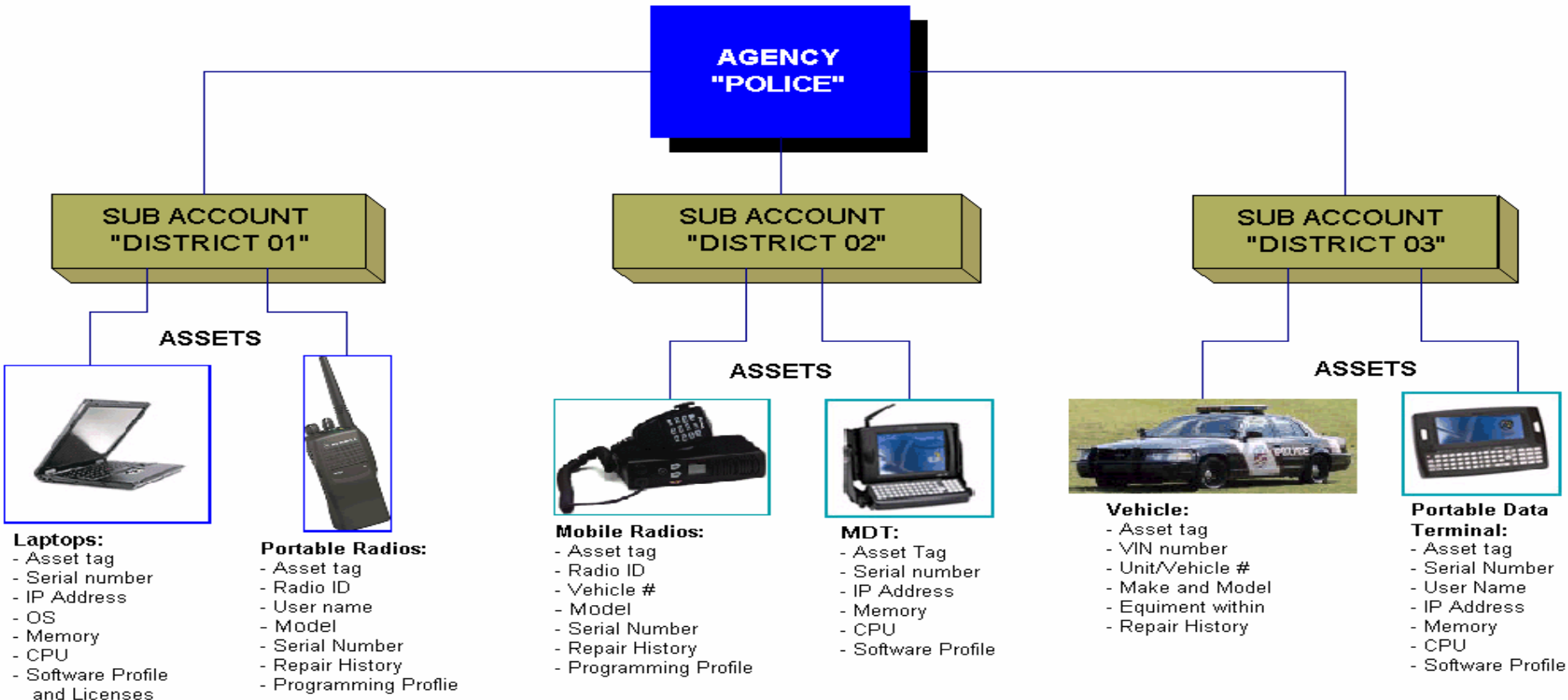
What Is Real-Time™ Public Safety and Communications Lifecycle Management?





MCM Public Safety and Communications Asset Hierarchy

MCM Asset Management Hierarchy



Asset Tracking



Work Orders



Inventory



Handheld Inventory Solutions



Billing



Technician Management



Extensive Reporting



Full Accounting



WHY IS THE TIMING SO CRITICAL?

MCM TECHNOLOGY'S PATH TO MISSION CRITICAL AND HOMELAND SECURITY EMERGENCY MANAGEMENT PREPAREDNESS

- VULNERABILITY
- ENGINEERING
- IMPLEMENTATION
- READINESS
- DEPLOYMENT



What Is Real-Time Complex Asset Lifecycle Management?

First Let's Define a Complex Asset:

A Complex Asset has:

- Multiple Unique and Searchable Identifications
- Detailed Work Order History
- Warranty and planned preventative maintenance
- Status, Condition and Location
- Frequency Phone Number or Pager Cap Code

Example of what is complex:

- Mobile Two-Way Radios
- Telecommunications Equipment
- Computers, IT Equipment and Software

Example of what is not:

- Desk – Chair – Building – Calculator - Phone



What else defines a Complex Asset ?

It can contains other assets.

A computer contains software

A pager contains a phone number

It often has a warranty with a limited time and specific service requirements.

For example:

Radios interact with Motorola or MA/COM radio networks

Emergency Vehicles contain many complex assets



Maricopa County, Arizona is one of the nations largest and most efficient government agencies in the USA. The Cities of Phoenix, Scottsdale, Tempe and Mesa all reside within the boundaries of Maricopa County.

During tough economic times local and State governments sell bonds to achieve balanced budgets. These bonds are secured by Assets and Equipment within each City, County or State.

While most local and state governments are having trouble locating even 50% of their assets and equipment.

Efficient And Responsible agencies like Maricopa County, Arizona know where 100% of their assets and equipment are at any time of every day using

MCM Technology
Developers of MCM Real Time™
Complex Asset Management Software
www.mcmtechnology.com
1.877.626.6156 toll free

Asset Enterprise Products & Services

Summary Review

Standard Core Modules included in Asset Enterprise

- **Agency Management** *(agency database as well as full receivables functions)*
- **Recurring Charges** *(flat rate recurring or per piece asset reconciliation)*
- **Multi-Location Inventory** *(multi-location parts and services inventory)*
- **Agency Asset Management** *(asset lifecycle & work order management)*
- **Purchase Order Management** *(fully integrated purchase order module)*
- **Revenue & Expense Management** *(fully integrated g/l distribution control)*
- **R & R Custom Report Designer** *(ability to create custom reports & exports)*

Optional Application Modules

- **Signature Capture** *(electronically capture signatures on w/o's and invoices)*
- **Rapid Physical Inventory PDA** *(expedite non-serialized physical inventory by PDA)*
- **Serialized Asset Audit-Import/PDA** *(ability to scan serialized assets with handheld for audit and/or import)*
- **Citrix MetaFrame© connectivity** *(access your network remotely over the web seamlessly)*
- **Turn-key hardware solutions** *(turn-key hardware provider - IBM Business Partner)*
- **Pager Billing/Terminal Interface** *(pager management / paging terminal interface)*
- **SMR/Trunked Radio Management** *(SMR/Trunked Radio Management / Airtime analysis)*
- **Custom data exports** *(export generated w/o financials and costing to legacy systems)*
- **Cognos Business Intelligence** *(Analytical reporting/ Explore the data to uncover financial trends)*
- **GI/GPS Mapping** *(Geo database for location of assets/Service Demographics and planning)*
- **CSR Web Portal** *(Allows your customers to access their account information via web)*

Implementation

- **Pre-Engineering** *system design and workflow analysis)*
- **Data Conversion** *(import data from existing databases)*
- **System Application Installation** *(installation of application and workstation clients)*
- **On-site application training** *(administrative and clerical hands-on training)*
- **Follow-up on-site training** *(follow-up training 4-6 weeks after "Go-Live")*



MCM Technology

Developers of the MCM Real-Time™ Enterprise Solutions

Real-Time™

Public Safety and Communications

Asset

Lifecycle© Management

System Overview

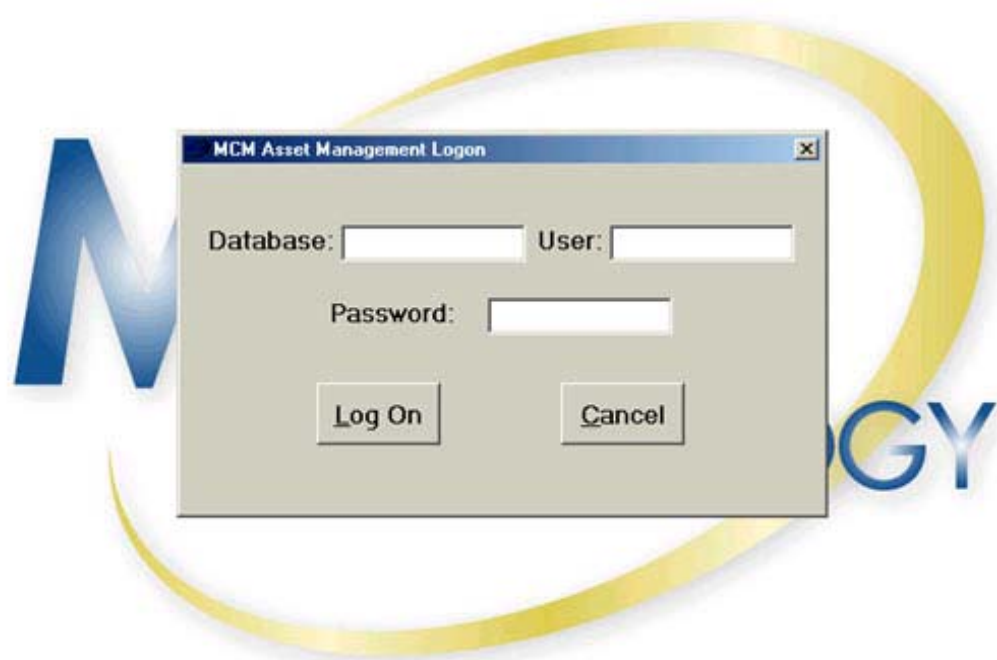
www.mcmtechnology.com

©1994-2004 MCM Real Time™

MCM's New User Interface



MCM is always looking to improve all aspects of our software, and we are currently nearing completion of an entirely new user interface. We are constantly adding new features and expanding our capabilities, and now we are proud to bring a new user interface that makes it easier for our users to navigate through the software.



MCM Asset Management Logon

Database: User:

Password:

Log On Cancel



Agency Account

- Agency Master File
- Reconcile AR Open
- Cash Receipts
- Cash Receipts Post
- Cash History
- Tag Codes
- Tax Titles
- Agency Listing
- AB Trial Balance
- Print Invoices
- Print Statements



Revenue/Expense



Inventory



Purchasing



Recurring



Asset Management

Customer Information [min] [max] [close]

Billing Information | Delivery Information | Account Profile | Accounting / Lookup

Account:

Name:

Address 1:

Address 2:

City/State/Zip:

County:

Contact:

Phones:

Page Selection

GY

- Agency Account
- Revenue/Expense
- Inventory
- Purchasing
- Recurring
- Asset Management
- Work Order Entry
- Work Order Edit/Post
- Agency Work Order History
- Asset Work Order History
- Project Management
- Technician Productivity
- Warranty Expiration
- PM Schedule Listing
- Asset Costing
- Sub Account Costing
- Sub Account And Asset Listing
- Billing History
- Detail WIP
- Daily Status
- Change Asset Rates
- Asset Transfer
- Time Card Entry
- Technician Entry
- Category/Prompts
- Frequency Tables
- Status Codes
- Service Codes

Service / Work Order Processing - Batch #200 - B & C Communications

22125	22125	Transfer W/O	User, Site, Service Location
S 779FYW2757	Serial #	Number	K M I (KALIDA MFG INC)
K M I (KALIDA MFG INC)		286281	1111 N ST RT 235
1111 N ST RT 235		Svc Code	P O BOX 607
Phone: 937-663-5941		TMA	ST PARIS OH, 43072-0000
Normal Billing Type: TMA		Service Order	Revenue Center COLUMBUS
Asset Detail		Billing: TMA	PO / Ref K013063-PS
Last Work Order 0		Type: Invoice	
Dated:	Apply To	286281	Order Detail
Next PM:			<input type="checkbox"/> Preventive Maintenance
Creator:			Order Total: 93.96
Last Modifier:	May 2, 2003		Print Invoice (Y/N): N
Date In Nov. 12, 2002 10:31 a.m.		Status 07	
Date Out	12:00 p.m.	Due By	
Service Required	Admin Notes	Tech Notes	Primary Technician
			P.O.S. Invoice
			Print Packing List





Presents the

MCM Real Time™

Asset Management Tracking
System

Business Intelligence Module



Filters

Category: WATER

All Locations

- Plantation
- Green Cove Springs
- Port St. Joe
- Ft. Pierce
- Bonifay
- Fernandina Beach
- Bradenton
- Madison

All Resource Class

- EXCAVATION
- POWER
- LIGHTING
- WATER PUMP
- WELDER
- GENERAL
- VEHICLE

Navigation

Navigation Viewpoints

Navigation controls: back, forward, home, refresh, zoom slider (Slow to Fast), and buttons for Map View, Pie Chart, Bar Chart, Gauge, Bar Whisker, Move Up, Move Down, Insert..., and Delete.





Filters

- Category: WATER
- All Locations
- Plantation
 - Green Cove Springs
 - Port St. Joe
 - Ft. Pierce
 - Bonifay
 - Fernandina Beach
 - Bradenton
 - Madison

All Resource Class

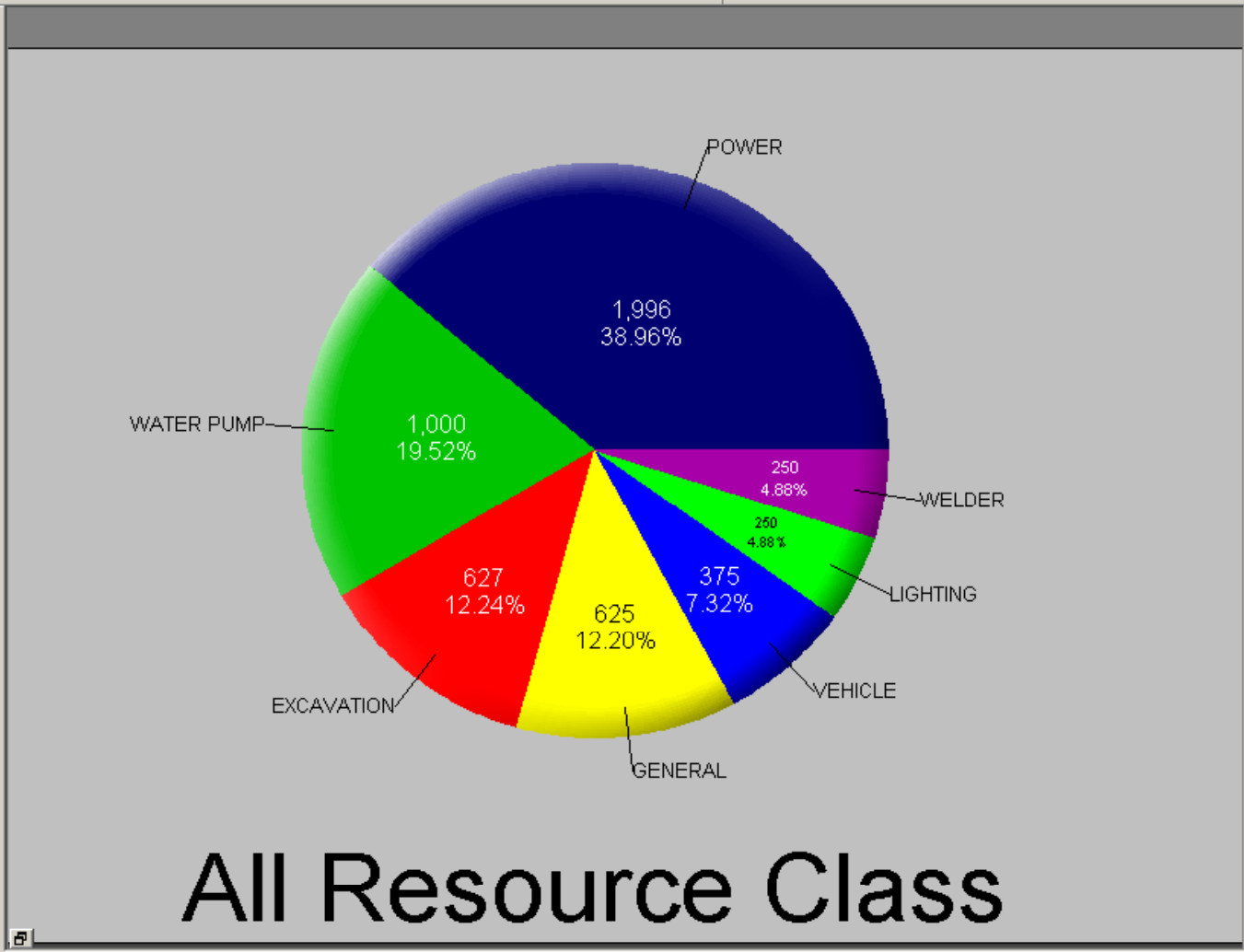
- EXCAVATION
- POWER
- LIGHTING
- WATER PUMP
- WELDER
- GENERAL
- VEHICLE

Navigation

Navigation Viewpoints

Navigation controls: back, forward, refresh, zoom slider (Slow to Fast), and buttons for Move Up, Move Down, Insert, and Delete.

Map View
Pie Chart
Bar Chart
Gauge
Bar Whisker



All Resource Class



Filters

Category: WATER

All Locations

- Plantation
- Green Cove Springs
- Port St. Joe
- Ft. Pierce
- Bonifay
- Fernandina Beach
- Bradenton
- Madison

All Resource Class

- EXCAVATION
- POWER
- LIGHTING
- WATER PUMP
- WELDER
- GENERAL
- VEHICLE

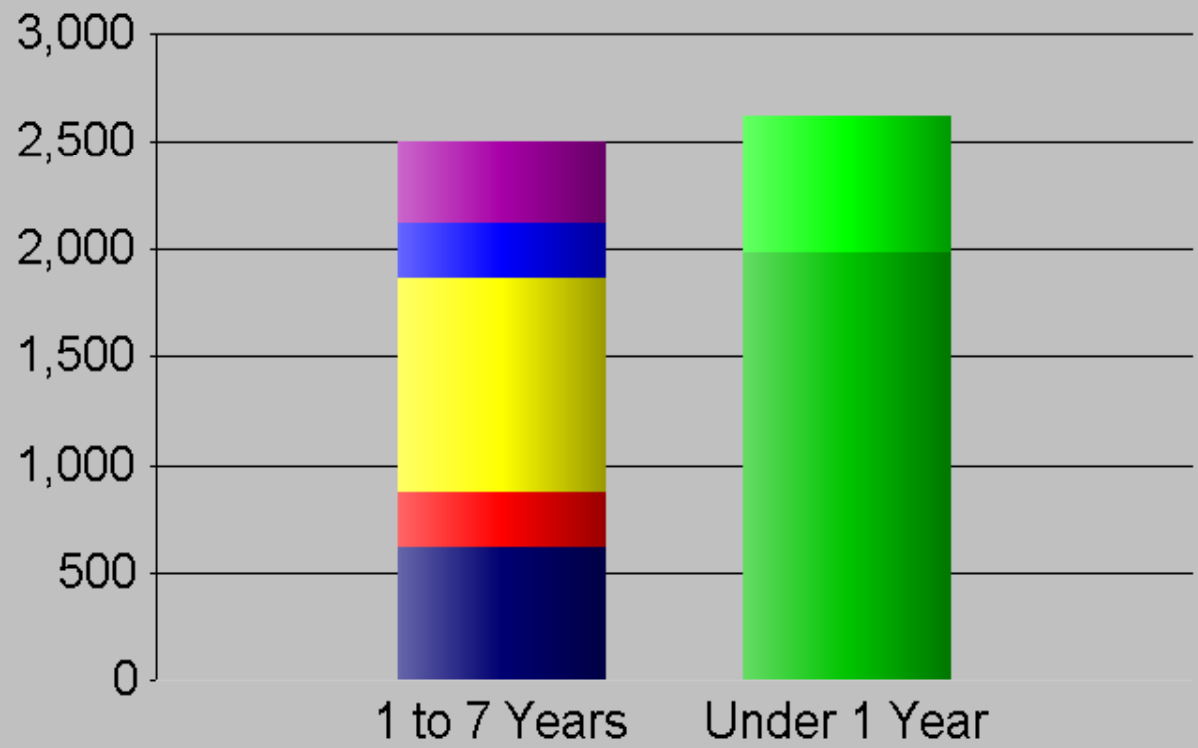
Navigation

Navigation Viewpoints



- Map View
 - Pie Chart
 - Bar Chart**
 - Gauge
 - Bar Whisker
- Move Up
Move Down
Insert...
Delete

Resource Count



Asset Age Range

Cognos Visualizer - Copy of MCM Vis Dashboard - [Four Panel (2D)]

File Edit View Insert Data Tools Window Help

Filters

- Category: WATER
- All Locations
 - Plantation
 - Green Cove Springs
 - Port St. Joe
 - Ft. Pierce
 - Bonifay
 - Fernandina Beach
 - Bradenton
 - Madison
- All Resource Class
 - EXCAVATION
 - POWER
 - LIGHTING
 - WATER PUMP
 - WELDER
 - GENERAL
 - VEHICLE

Navigation

Navigation Viewpoints

Slow Fast

Map View
Pie Chart
Bar Chart
Gauge
Bar Whisker

Move Up
Move Down
Insert...
Delete

16OZ-WATER

Qty On Hand
[16OZ-WATER]

Sheet 1

Ready



Filters

Category: WATER

All Locations

- Plantation
- Green Cove Springs
- Port St. Joe
- Ft. Pierce
- Bonifay
- Fernandina Beach
- Bradenton
- Madison

All Resource Class

- EXCAVATION
- POWER
- LIGHTING
- WATER PUMP
- WELDER
- GENERAL
- VEHICLE

Navigation

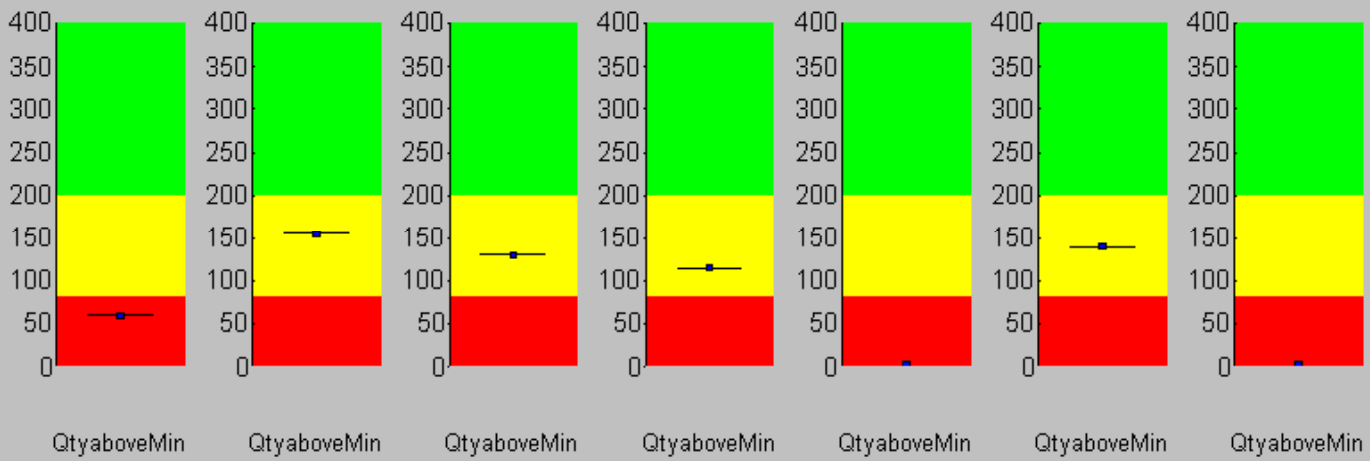
Navigation Viewpoints

Navigation controls: Previous, Stop, Play, Next, Refresh

Speed slider: Slow to Fast

Map View, Pie Chart, Bar Chart, Gauge, Bar Whisker

Move Up, Move Down, Insert..., Delete



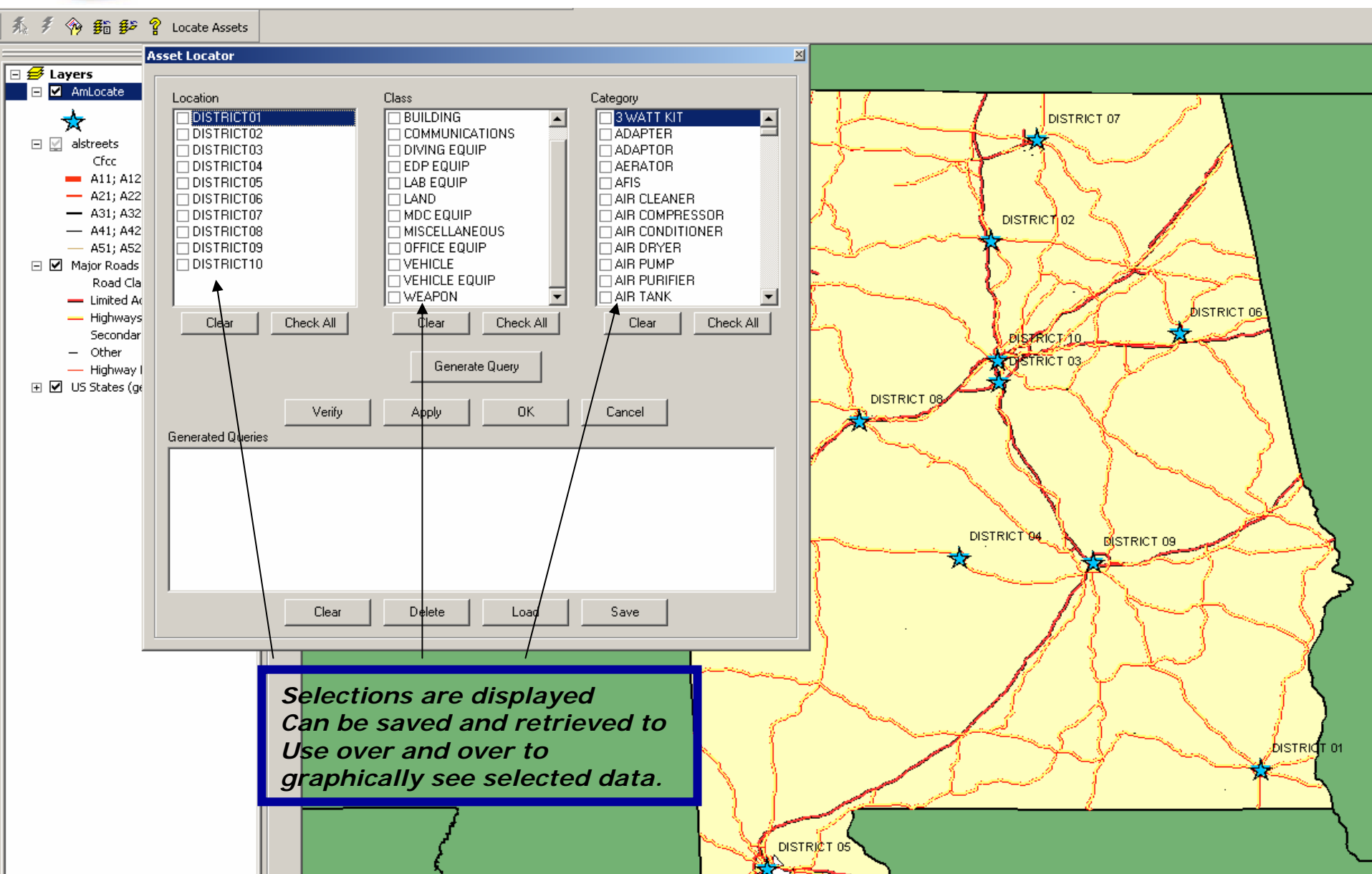
16OZ-WATER 5GAL-WATER ICE; 8 LB. BAG ICE; 8 LB. LOT TRAILER, TANKER WATER; 1 GALLON WATER; TRUCKLOAD

Item



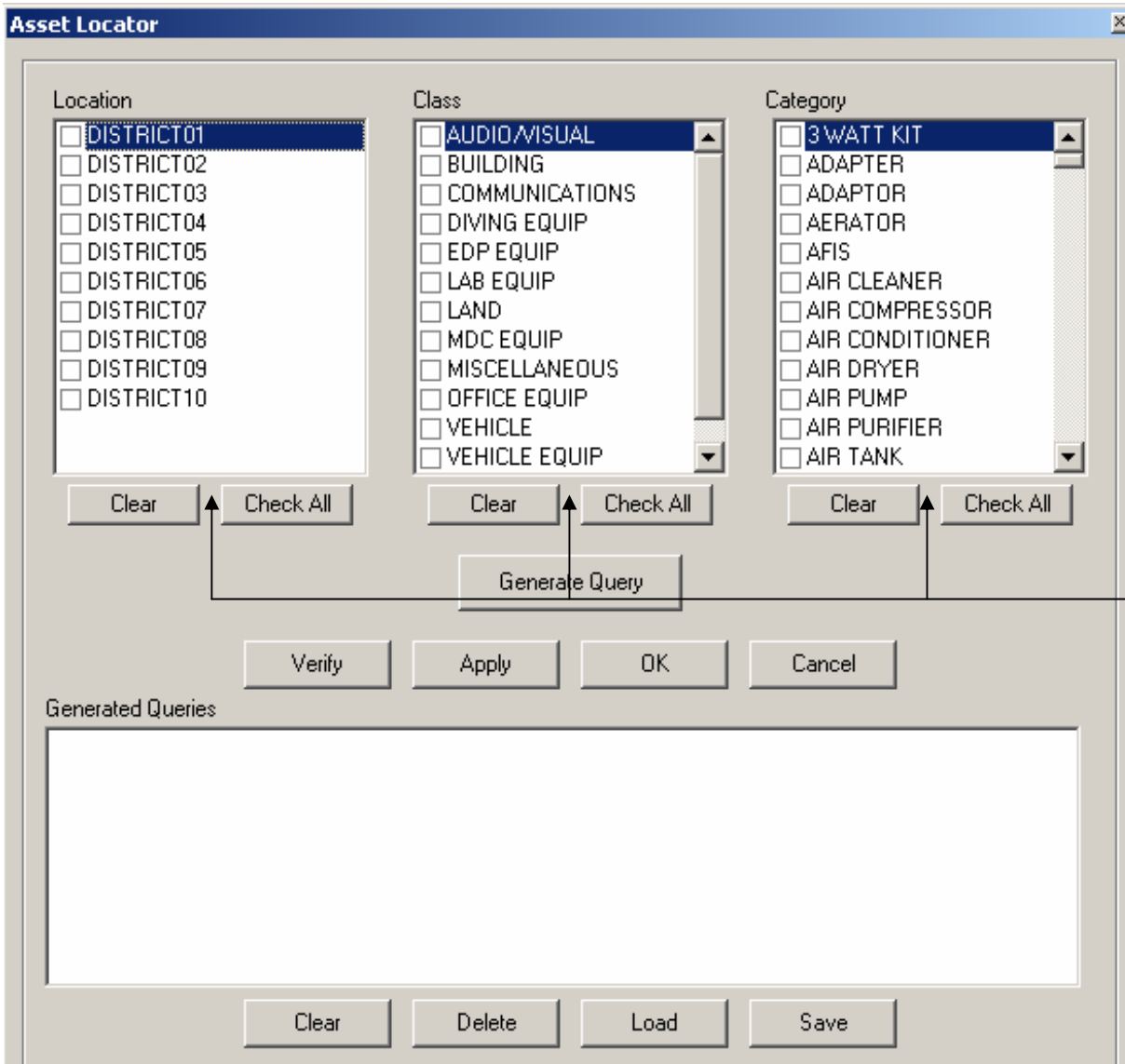


Presents the
MCM Real Time™
Complex Asset Management
Tracking System
GIS Overlay



***Selections are displayed
Can be saved and retrieved to
Use over and over to
graphically see selected data.***

Asset Location- Selection Query



The screenshot shows the 'Asset Locator' application window. It features three columns of selection options: 'Location' (DISTRICT01-10), 'Class' (AUDIO/MISUAL, BUILDING, COMMUNICATIONS, DIVING EQUIP, EDP EQUIP, LAB EQUIP, LAND, MDC EQUIP, MISCELLANEOUS, OFFICE EQUIP, VEHICLE, VEHICLE EQUIP), and 'Category' (3 WATT KIT, ADAPTER, ADAPTOR, AERATOR, AFIS, AIR CLEANER, AIR COMPRESSOR, AIR CONDITIONER, AIR DRYER, AIR PUMP, AIR PURIFIER, AIR TANK). Each column has 'Clear' and 'Check All' buttons. A 'Generate Query' button is centered below these columns. At the bottom, there are 'Verify', 'Apply', 'OK', and 'Cancel' buttons. Below these is a 'Generated Queries' list box, and at the very bottom are 'Clear', 'Delete', 'Load', and 'Save' buttons.

With the user-friendly selectable query, you will be able to select by location, product class and product category to instantly get a graphical view of the data selected within the query.

You will be able to create and save your queries for complicated frequent queries you use and be able to recall those queries quickly to display the data needed.

All at your fingertips.

Asset Selection Browse

Selected Assets

Asset #	Serial #	Description	Class
861001	861861001861	SHOTGUN REMINGTON...	WEAPON
862001	862862001862	SHOTGUN REMINGTON...	WEAPON
863001	86363VT192463V	SHOTGUN REMINGTON...	WEAPON
864001	86480VS307480V	REMINGTON 870 SHOT...	WEAPON
865001	865865001865	SHOTGUN REMINGTON...	WEAPON
866001	866644SNR1174644	SHOTGUN REMINGTON...	WEAPON
867001	867867001867	SHOTGUN REMINGTON...	WEAPON
713018	713900786900	RIFLE W/SCOPE & CASE	WEAPON
718018	718718018718	GUN RIFLE WINCH MO...	WEAPON
732018	732732018732	GUN RIFLE WINCH MO...	WEAPON
769018	769446865446	RIFLE W/SCOPE & CASE	WEAPON
789018	789608865608	RIFLE	WEAPON
233036	233233036233	RIFLESCOPE SURVEILL...	WEAPON
913036	913525SN R096525	SHOTGUN REMINGTON...	WEAPON
914036	914914036914	SHOTGUN REMINGTON...	WEAPON
916036	916916036916	SHOTGUN REMINGTON...	WEAPON
918036	918918036918	SHOTGUN REMINGTON...	WEAPON
924036	92422W092722V	REMINGTON 870 SHOT...	WEAPON
000000	000000000000	SHOTGUN REMINGTON...	WEAPON

6105 assets selected

Zoom Report Close

Within the selection query, you will be able to browse the data found within the query and instantly zoom to the data visually on a graphical map or you may click the "Report" button to see the data in report form.



Report from Query

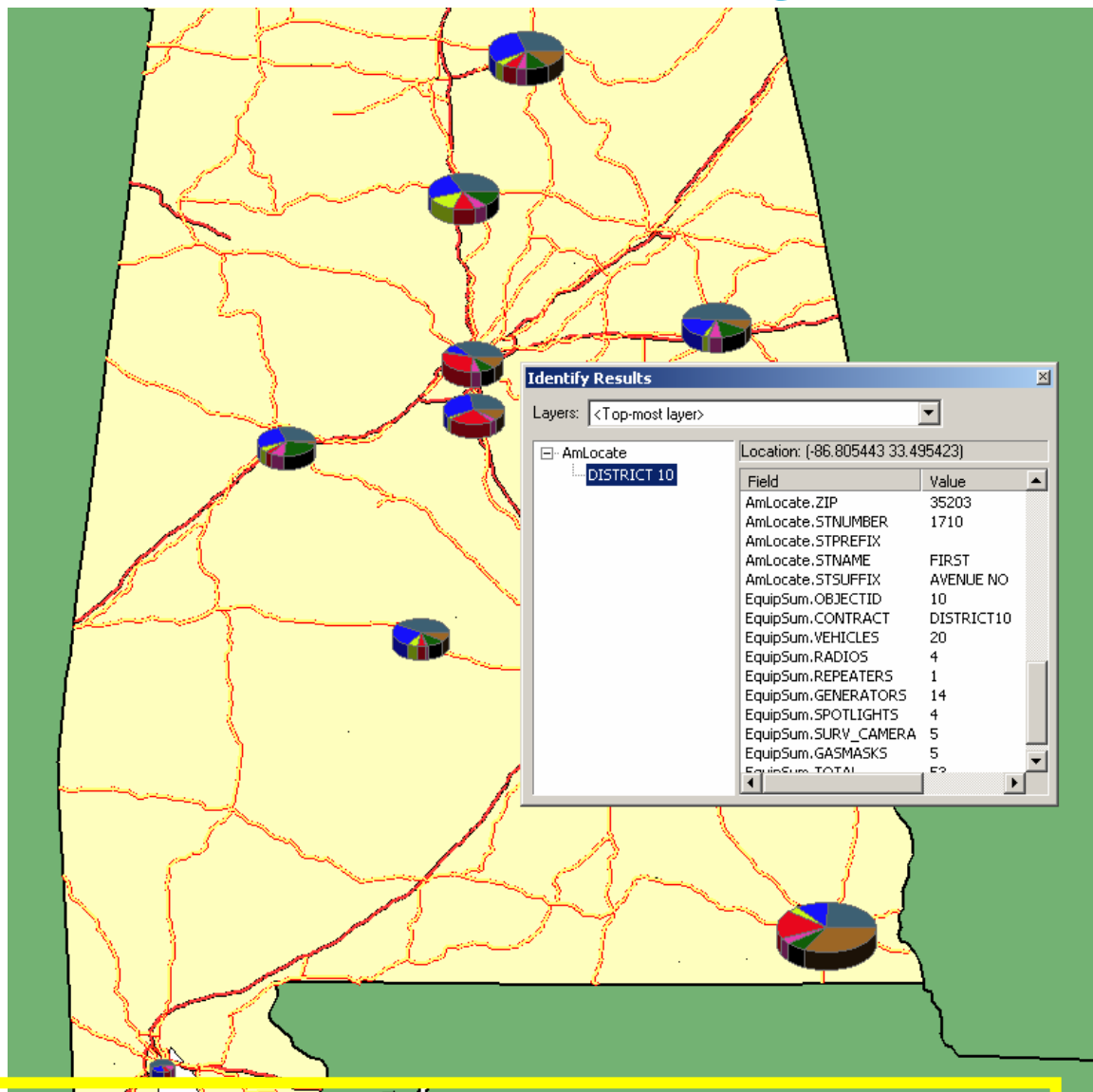
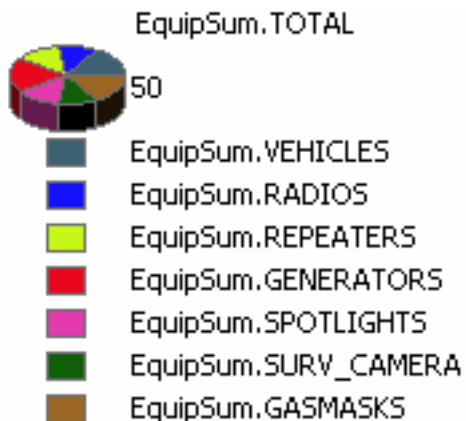
Alabama State Police

6/2/2003

LOCATION	CLASS	CATEGORY	ASSET	SERIALNB	DESCRIPTION	NAME	BUILDING	FLOOR	ROOM	EMPLOYEE	ACQDATE	SVCDY
DISTRICT03	WEAPON	SHOTGUN	836097	83639MC79C	SHOTGUN, 12 GA. PARKE	DISTRICT 03					6/16/2000 12:0	6/22/20
			837097	83749MC79C	SHOTGUN, 12 GA. PARKE	DISTRICT 03					6/16/2000 12:0	6/22/20
			838097	83837MC79C	SHOTGUN, 12 GA. PARKE	DISTRICT 03					6/16/2000 12:0	6/22/20
			839097	83985MC79C	SHOTGUN, 12 GA. PARKE	DISTRICT 03					6/16/2000 12:0	6/22/20
			840097	84088MC79C	SHOTGUN, 12 GA. PARKE	DISTRICT 03					6/16/2000 12:0	6/22/20
			841097	84147MC79C	SHOTGUN, 12 GA. PARKE	DISTRICT 03					6/16/2000 12:0	6/22/20
			842097	84289MC79C	SHOTGUN, 12 GA. PARKE	DISTRICT 03					6/16/2000 12:0	6/22/20
			843097	84345MC79C	SHOTGUN, 12 GA. PARKE	DISTRICT 03					6/16/2000 12:0	6/22/20
			844097	84459MC76E	SHOTGUN, 12 GA. PARKE	DISTRICT 03					6/16/2000 12:0	6/22/20
			845097	84575MC79C	SHOTGUN, 12 GA. PARKE	DISTRICT 03					6/16/2000 12:0	6/22/20
			846097	84649MC79C	SHOTGUN, 12 GA. PARKE	DISTRICT 03					6/16/2000 12:0	6/22/20
			847097	84738MC79C	SHOTGUN, 12 GA. PARKE	DISTRICT 03					6/16/2000 12:0	6/22/20
			848097	84828MC76E	SHOTGUN, 12 GA. PARKE	DISTRICT 03					6/16/2000 12:0	6/22/20
			849097	84955MC76E	SHOTGUN, 20" PARKER	DISTRICT 03					6/7/2000 12:0	9/12/20
			850097	85057MC76E	SHOTGUN, 20" PARKER	DISTRICT 03					6/7/2000 12:0	9/12/20
			851097	85170MC76E	SHOTGUN, 20" PARKER	DISTRICT 03					6/7/2000 12:0	9/12/20
DISTRICT04		RIFLE	974207	9749742079	RIFLE CALIBRATOR ZER	DISTRICT 04				FIR 128	2/1/1987 12:0	
DISTRICT05		PISTOL	056223	0560562230	GRINDER ELEC PED MOI	DISTRICT 05				PHYSKL FAIRBURN D	6/1/1959 12:0	
			939223	9399392239	COMPRESSOR AIR WRE	DISTRICT 05				PHYSKL SMITH J	9/1/1959 12:0	
DISTRICT06			018244	018636AE42	PISTOL, NIGHTSIGHT	DISTRICT 06				FIR 129	6/1/1996 12:0	6/28/19
			019244	019965AE43	PISTOL, NIGHTSIGHT	DISTRICT 06				FIR 129	6/1/1996 12:0	6/28/19
			020244	020964AE43	PISTOL, NIGHTSIGHT	DISTRICT 06				FIR 129	6/1/1996 12:0	6/28/19
			021244	021966AE43	PISTOL, NIGHTSIGHT	DISTRICT 06				FIR 129	6/1/1996 12:0	6/28/19
			855243	8558552438	BLANK PISTOL	DISTRICT 06				PHYSKL LYDDON S	6/13/1996 12:0	6/27/19
			856243	8568562438	BLANK PISTOL	DISTRICT 06				PHYSKL LYDDON S	6/13/1996 12:0	6/27/19
			857243	8578572438	BLANK PISTOL	DISTRICT 06				PHYSKL LYDDON S	6/13/1996 12:0	6/27/19
			858243	8588582438	BLANK PISTOL	DISTRICT 06				PHYSKL LYDDON S	6/13/1996 12:0	6/27/19
			859243	8598592438	BLANK PISTOL	DISTRICT 06				PHYSKL LYDDON S	6/13/1996 12:0	6/27/19
			860243	8608602438	BLANK PISTOL	DISTRICT 06				TRNG DELETION	6/13/1996 12:0	6/27/19
			861243	8618612438	BLANK PISTOL	DISTRICT 06				PHYSKL LYDDON S	6/13/1996 12:0	6/27/19
			862243	8628622438	BLANK PISTOL	DISTRICT 06				PHYSKL LYDDON S	6/13/1996 12:0	6/27/19
DISTRICT07			177255	177076U571	PISTOL, 357 MAG	DISTRICT 07				FIR 129	10/29/1997 12	2/25/19
DISTRICT09		RIFLE	901286	901794MH07	MATCH H-BAR	DISTRICT 09				SOUTH DEMARET	8/2/2000 12:0	3/28/20
DISTRICT10		PISTOL	491493	4910USDDS	PISTOL, .40 CAL	DISTRICT 10					8/12/1999 12:0	8/13/19
		SHOTGUN	456R87	45614MX15E	SHOTGUN REMINGTON E	DISTRICT 10					2/1/1990 12:0	
			457R87	45795MX151	SHOTGUN REMINGTON E	DISTRICT 10					2/1/1990 12:0	
			458R87	45821MX15E	SHOTGUN REMINGTON E	DISTRICT 10					2/1/1990 12:0	
			459R87	45918MX15E	SHOTGUN REMINGTON E	DISTRICT 10					2/1/1990 12:0	

By selecting from the query, you will have the choice to graphically view the data via GIS mapping or in report form (as seen above). Reports data exports are written to client specifications.

Graphical Asset Overlay



By selecting from the easy to use query, you will be able to visually see the selected data from your query, quickly and precisely with our GIS overlay.



MCM Real Time™ Systems

The Gold Standard in Product, Performance and Customer Service



Seattle, Washington



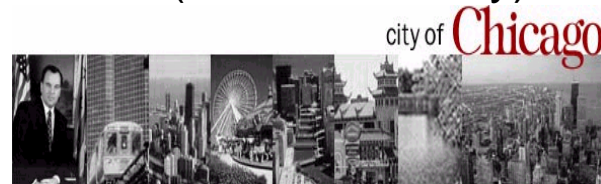
Columbus, Ohio



Long Beach, California



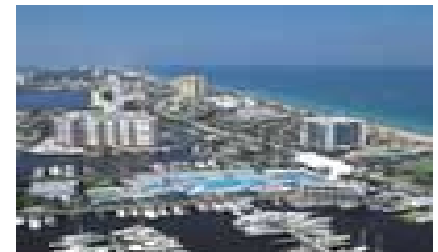
Rochester, New York
(Monroe County)



Chicago, Illinois



Phoenix, Arizona
(Maricopa County)



Ft. Lauderdale, FL
(Broward County)

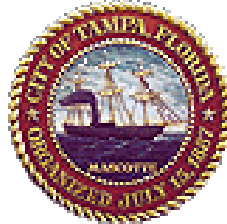


Known by the company we keep



STATE OF IDAHO

Department of Administration
Information Technology



CITY OF SEATTLE



Contra Costa County

California

Government Information





MCM Real Time™ Systems





MCM TECHNOLOGY KNOWN BY THE COMPANY WE KEEP



Communications



city of **Chicago**





MCM Technology, LLC, providers of the MCM Real-Time Suite of software for the wireless communications industry and Complex Asset Management for the government sector, will partner with Christie & Walther in providing the latest version of the MCM REAL-TIME Paging Management System. Founded in 1962, Christie and Walther has established itself as one of the premier communication companies in North America, and regularly supplies communications for major political and sporting events, such as the APEC conference, the World Series and the Super Bowl.

In 1991, Christie and Walther personnel won an EMMY award for technical support to CBS television during the World Series.

Christie and Walther has established itself as one of the premier communication companies in North America, and regularly supplies communications for major political and sporting events, such as the APEC conference, the World Series and the Super Bowl



What are the steps in Getting Started with MCM

- **Assessing your requirements and timeframe**
Current system, Operational methodologies, Greatest needs, Web demonstration, Educational presentations, Marketing material
- **Designing a solution for your agency**
Customized proposal w/ ROI, RFP supporting material & consulting
- **Implementation and consulting process**
Assist with data conversion, install MCM software, and work with the customer to maximize utilization with minimum interruption
- **Startup and training along with long term support**
MCM stays with you for the first day of start-up and provides on-site training for your staff along with documentation. Then, Monday thru Friday, 8 to 5PM EST, remote phone support is provided to your staff



How can you buy MCM Asset Management Systems for your department or project

- MCM Sells Direct via its Consultants and Sales Team
- MCM Can be purchased through Government Channel Partners such as GTSI using pre competed contract like www.uscommunities.org eliminating the need for an RFP in most markets
- Through system integrators as part of a larger project